



The Lymm Meadow Road, Houghton Conquest, Bedford, MK45 3GJ
Prices from £399,750 Freehold



PART EXCHANGE/CHAIN BREAK AVAILABLE ON THIS PROPERTY!!

LUXURY 3 BED 3 STOREY HOME!

A brand new 3 bedroom semi detached town house due for completion early 2023. The property features a superb open plan kitchen/dining/family room, a first floor living room, master bedroom with en-suite, two further bedrooms, family bathroom gardens and a SINGLE GARAGE.

The property will be built to a high specification including integrated appliances in the kitchen and contemporary sanitary-ware.

Call us today for more information and book your viewing

Entrance Hall

Cloakroom

5'6 x 2'9 (1.68m x 0.84m)

Family Room/Dining Room

16'1 x 13'3 (4.90m x 4.04m)

Kitchen

10' x 8'10 (3.05m x 2.69m)

1st Floor Landing

Bedroom 3/Study

9' x 9' (2.74m x 2.74m)

Lounge

16'1 x 13'3 (4.90m x 4.04m)

2nd Floor Landing

Master bedroom

13'1 x 9' (3.99m x 2.74m)

En Suite

6'9 x 4'4 (2.06m x 1.32m)

Bedroom 2

9'2 x 9' (2.79m x 2.74m)

Bathroom

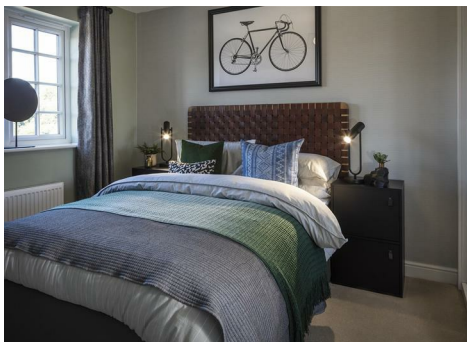
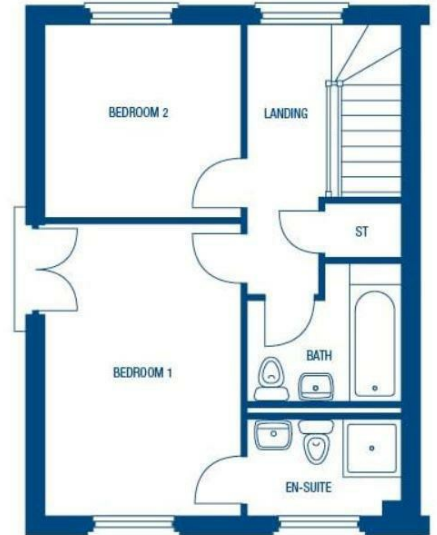
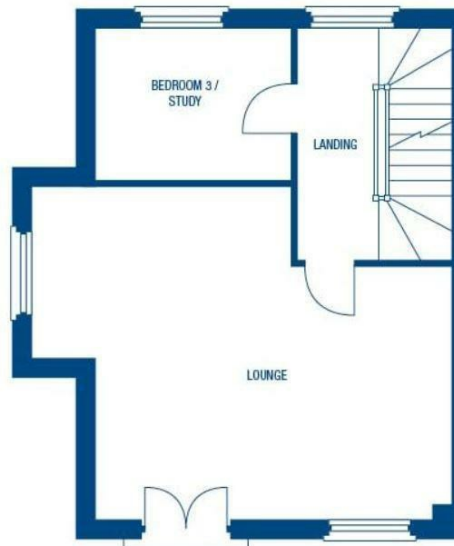
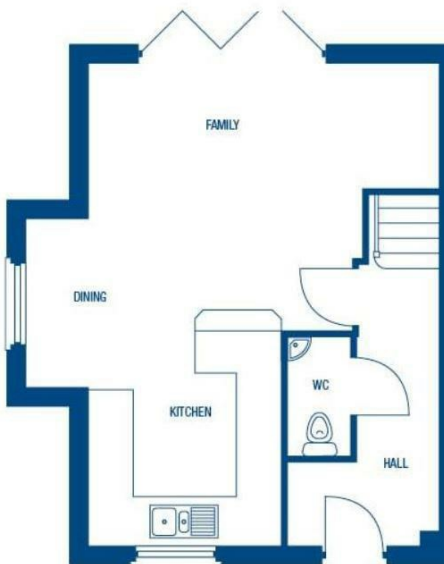
6'9 x 6'3 (2.06m x 1.91m)

Enclosed Rear Garden

Single Garage

Greenlakes Rise, Wixams

Greenlakes Rise is a stunning development located in a sleepy village just outside of Bedford and surrounded by rural landscapes and several reservoirs with scenic walks along their banks, near to the village of Houghton Conquest. It is ideal for those looking to enjoy life at a more leisurely pace. With an old manor house to explore and a number of warm and welcoming pubs in Houghton Conquest Conquest village just over 2 miles away and the bustling city of Bedford being only 20 minutes drive away. The nearby A6, also offers easy access to the M1/A1(M) link roads. Kempston Hardwick is an ideal village location.



Taylor Made New Homes Limited
Taylor House, Roman Gate, Saxon Way, Great
Denham, Bedford, MK40 4FU



01234 302043



bedford@taylormadeproperties.co.uk
www.taylorlandandpropertygroup.co.uk

Company Registration: 7122033 VAT No: 158 9989 22

